

Fine/Visual Motor:

- 🍏 Hand preference may be established
- 🍏 Beginning to use a pencil with side of hand resting on the table
- 🍏 Cuts with scissors fairly accurately along curved lines and simple shapes with corners **(Figure 1)**
- 🍏 Imitates more complex (6-10 piece) structures with blocks, Lego or other building toys
- 🍏 Colours with more accuracy within the lines **(Figure 2)**
- 🍏 Completes a 12-20 piece puzzle
- 🍏 Can target smoothly to complete mazes and dot to dots
- 🍏 Copies more complex shapes (Δ) and simple shape combinations for more detailed drawings **(Figure 3)**
- 🍏 Draws a person with four to six body parts **(Figure 4)**
- 🍏 Prints some letters (primarily upper case) and numbers **(Figure 5)**

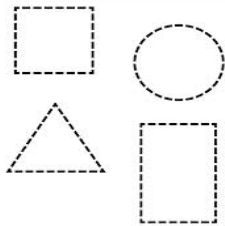


Figure 1



Figure 2

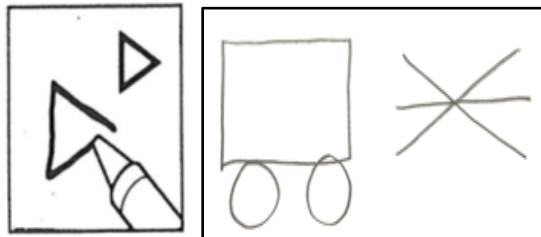


Figure 3

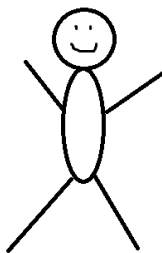


Figure 4

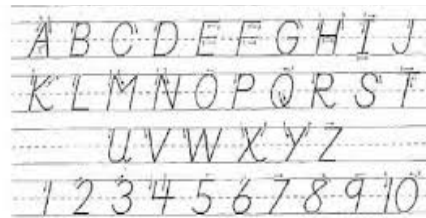


Figure 5

For more information visit:

http://dcd.canchild.ca/en/EducationalMaterials/resources/dcd_motor_development_2013.pdf

Self-Care:

Grooming

- 🍏 Brushes teeth (**Figure 5**)
- 🍏 Brushes hair (**Figure 6**)
- 🍏 Uses the toilet alone



Figure 5



Figure 6

Dressing

- 🍏 Dresses/undresses independently (help for fasteners)
- 🍏 Able to start and pull zippers up and down (**Figure 7**)
- 🍏 Fastens Velcro shoes
- 🍏 Beginning to button or snap top of pants



Figure 7

Feeding

- 🍏 Eats independently
- 🍏 Uses table utensils well (**Figure 8**)

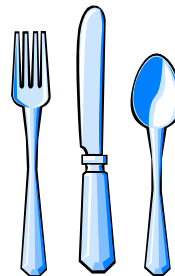


Figure 8